

# THE CROSSING HIGH DENSITY RESIDENTIAL



## PROJECT NARRATIVE

The Crossing's two 5-story ConX structures provide 517,000 SqFt of luxury apartments and condominiums over a 2-level subterranean parking podium. Without the 4-story limitation of the surrounding wood structures, ConX was able to deliver the much needed extra floor at a competitive price, maximizing floor area ratio.

The ConX team delivered over 4,000 SqFt/day of structure as well as decking, concrete on deck, exterior wall panels and exit stairs, accelerating the delivery of the completed project. The project was constructed sequentially in vertical sections, enabling fire sprinkler, plumbing, electrical and roofing contractors to commence their work quickly and efficiently right behind ConXtech.

## CONX SOLUTIONS

With this project's close proximity to the San Andreas fault line, ConXtech utilized a combination of both special moment frames and eccentrically braced frames to deliver the most cost effective structure for the demanding seismic conditions.

## PROJECT DATA

Square Footage	517,000 SqFt
Steel Assembly Duration	105 Days
Number of Collars	2,872
Bay Spacing	11'x15'
Structure Weight	2,585 tons; 10 lbs./SqFt



## STAKEHOLDERS

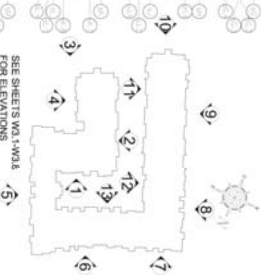
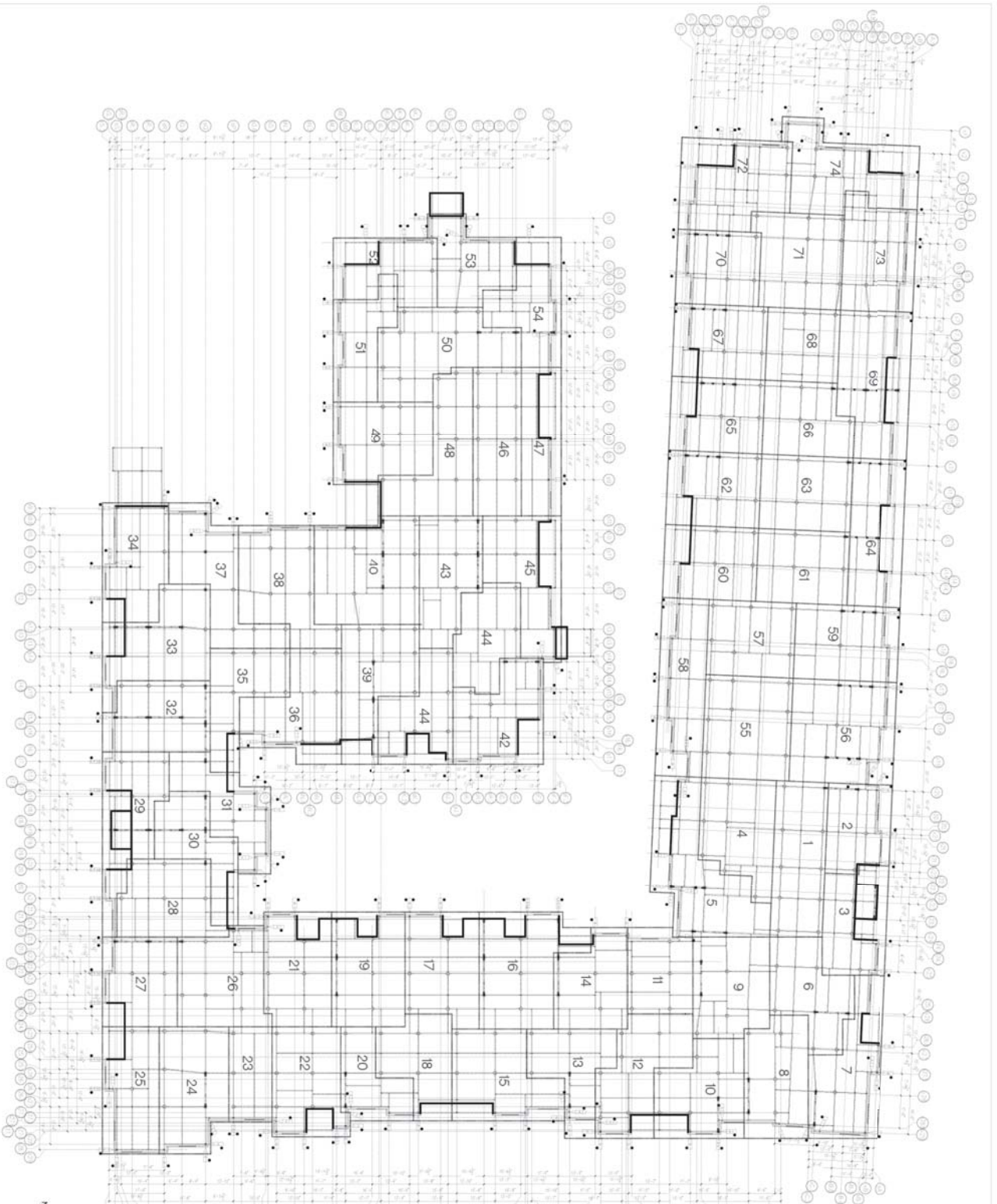
Owner	SNK Development
Architect	HDO Architects
Engineer	FBA Engineers
Contractor	SNK Construction
Steel Fabricator	ConXtech Manufacturing
Steel Erector	ConXtech Construction
ConXtech Scope	Structural Steel, Metal Decking, Stairs, Exterior Panels



## CONTACT US

ConXtech, Inc. 6701 Koll Center Parkway, Suite 150, Pleasanton, CA 94566  
 E-mail: [info@conxtech.com](mailto:info@conxtech.com) | Phone: 510-264-9111 | [www.ConXtech.com](http://www.ConXtech.com)

# FRAMING PLAN - THE CROSSING



**NOTES FOR APPROVAL:**

- DIMENSIONS ARE FROM GRIDLINE TO FACE OF STUD
- WINDOW AND DOORS ARE SHOWN FOR REFERENCE ONLY. ALL DIMENSIONS TO BE REVIEWED AND VERIFIED
- OR CORRECT DIMENSIONS TO BE VERIFIED
- TOP OF STEEL FRAMING SHOWN IS LOCATED 4" BELOW TOP OF PANEL, U.O.N. ALL CONNEX PANELS ARE 1/4" FROM OUTSIDE FACE OF STUD TO CONN. U.O.N.

**LEGEND:**

- DENOTES CONNEX PANEL
- DENOTES FIELD FRAME
- DENOTES PANEL SEQ. NO.

**WHERE:**

- CONNEX JOB ENTRY NUMBER
- INDICATES SECTION SEQUENCE NUMBER
- ADENOTES LEVEL

**NOTE:** CONNEX WALL LAYOUT SHOWN IS FOR PRELIMINARY AND REPRESENTATION PURPOSES ONLY. DO NOT SCALE DRAWING.

**ABBREVIATIONS:**

- T.O.S. = TOP OF SLAB
- T.O.C. = TOP OF CONCRETE
- T.O.P. = TOP OF PANEL
- A.F.F. = ABOVE FINISH FLOOR
- B.F.F. = BELOW FINISH FLOOR
- W.O. = WALL OPENING
- R.O. = ROOF OPENING

## THE CROSSING

BUILDING 2  
SAN BRUNO, CALIFORNIA

**FOR REFERENCE**

REGION NO.	REV. NO.	DATE

APPROVALS:

DESIGNER	DATE	CHECKER	DATE

PROJECT NO. 10045

SCALE: 1/8" = 1'-0"

DRAWN BY: DATE: CHECKER: DATE:

NO. 10/20/17

DRAWING TITLE: CONNEX WALL LAYOUT

PLAN: LEVEL: 02

SHEET NO. **W2-2-2**

