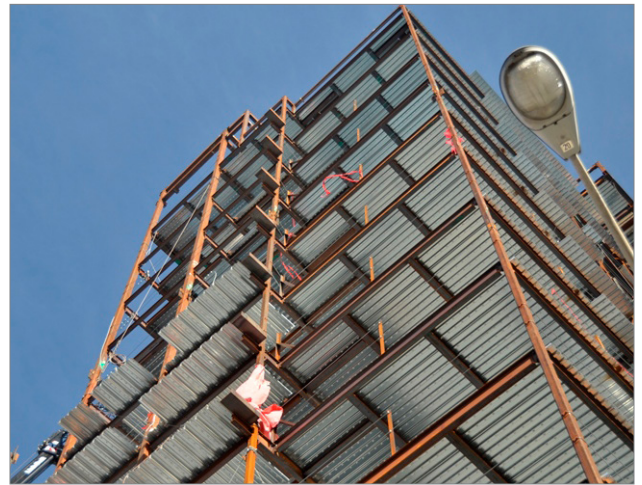


1450 FRANKLIN HD RESIDENTIAL



PROJECT NARRATIVE

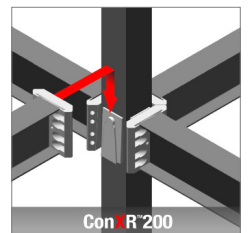
This 10-story ConXR steel structure in San Francisco, CA sits atop four levels of concrete podium including garage space and retail. Comprised of 67 units, this luxury condominium complex is located in Pacific Heights, one of San Francisco's most sought after and iconic neighborhoods.

CONX SOLUTIONS

The zero lot line construction posed a challenge for material delivery and steel assembly, however, close coordination with the general contractor made this a seamless process. The dense urban location naturally limited street/lane closures throughout the project; however, our rapid steel assembly process proved to be a far superior and time effective option than traditional steel.

PROJECT DATA

Square Footage	100,000 ft ²
Steel Assembly Duration	24 Days
Number of Collars	360
Bay Spacing	13' x 17"
Structure Weight	700 tons; 14 lbs./ft ²



STAKEHOLDERS

Owner	Village Properties
Architect	BDE Architecture
Engineer	FBA Engineers
Steel Fabricator	ConXtech Manufacturing
Steel Erector	ConXtech Construction
ConXtech Scope	Structural Steel, Stairs, Metal Decking



CONTACT US

ConXtech, Inc. 6701 Koll Center Parkway, Suite 150, Pleasanton, CA 94566
E-mail: info@conxtech.com | Phone: 510-264-9111 | www.ConXtech.com