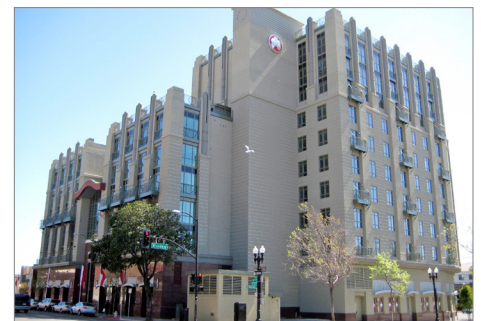


8 ORCHIDS HIGH DENSITY RESIDENTIAL



PROJECT NARRATIVE

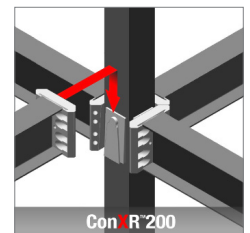
This nine-story ConXR structure atop a 3-story concrete podium offers over 200,000 ft² of residential space. Common areas include a 20-foot high entry lobby, community room, courtyards and rooftop garden. The rounded building front was designed to accommodate an existing freeway off-ramp and surrounding streets. Street level retail areas complete this innovative building located in historic Chinatown in downtown Oakland, CA.

CONX SOLUTIONS

The ConXR System was able to easily accommodate the architectural features of this unique, art-deco style building.

PROJECT DATA

Square Footage	200,000 ft ²
Steel Assembly Duration	40 Days
Number of Collars	884
Bay Spacing	12' x 16'
Structure Weight	1,200 tons; 12 lbs./ft ²



STAKEHOLDERS

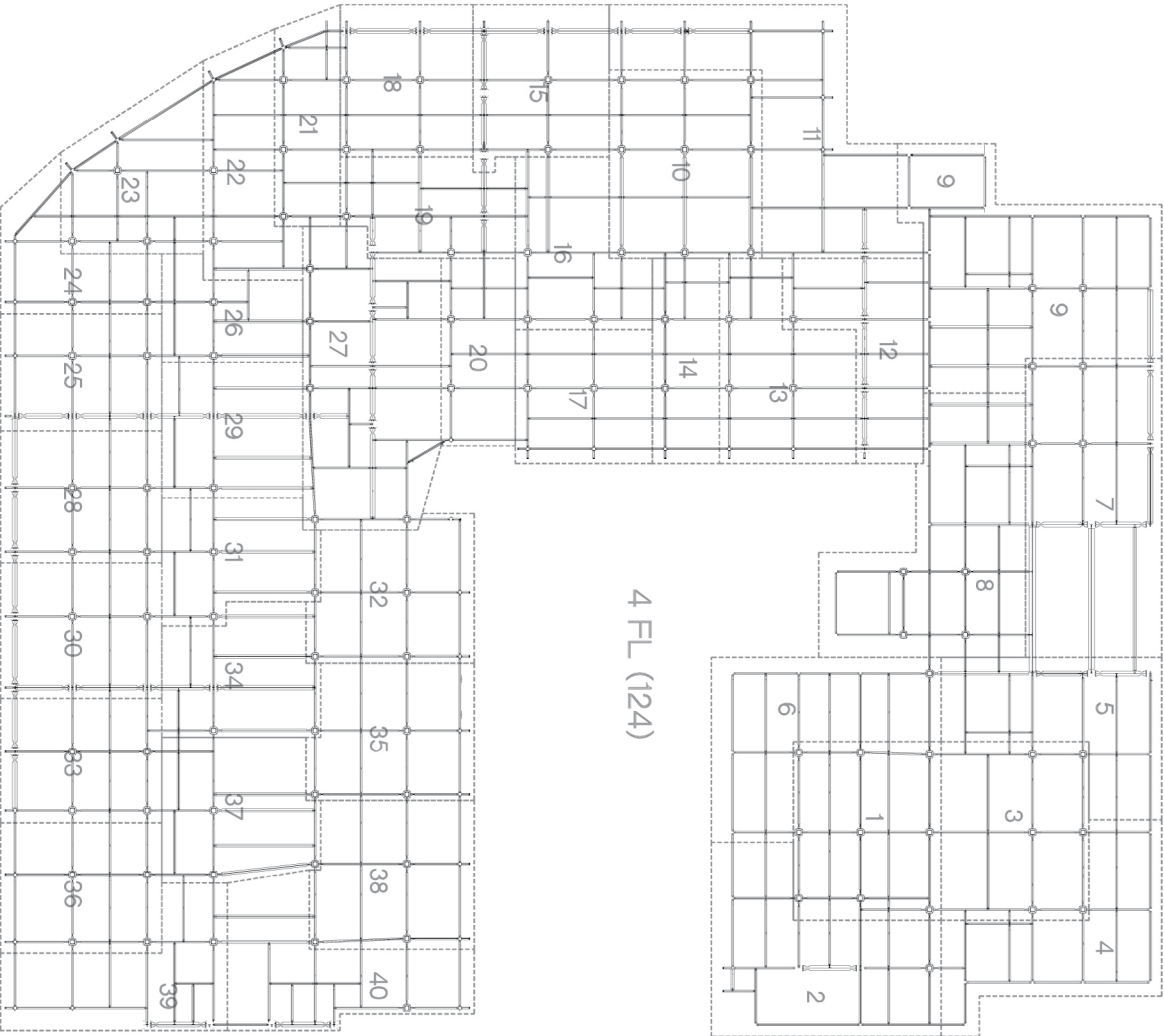
Owner	Bay Rock
Architect	HDO Architects
Engineer	FBA Engineers
Contractor	JR Roberts
Steel Fabricator	ConXtech Manufacturing
Steel Erector	ConXtech Construction
ConXtech Scope	Structural Steel, Metal Decking, Stairs, Exterior Panels

CONTACT US

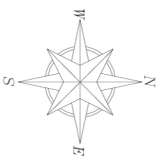
ConXtech, Inc. 6701 Koll Center Parkway, Suite 150, Pleasanton, CA 94566
E-mail: info@conxtech.com | Phone: 510-264-9111 | www.ConXtech.com




FRAMING PLAN - 8 ORCHIDS



4 FL (124)



CONXTECH REF:		DELIVERED ERECTED	
ARCH. REF:			
FILE NO.	COMP. NO.	TOWER	
LOCATION			
JOB NAME			
LOCATION			
OWNER			
DESIGNER			
DATE			
CHECKER			
JOB NUMBER			
CONTRACT NO.			



CONXTECH