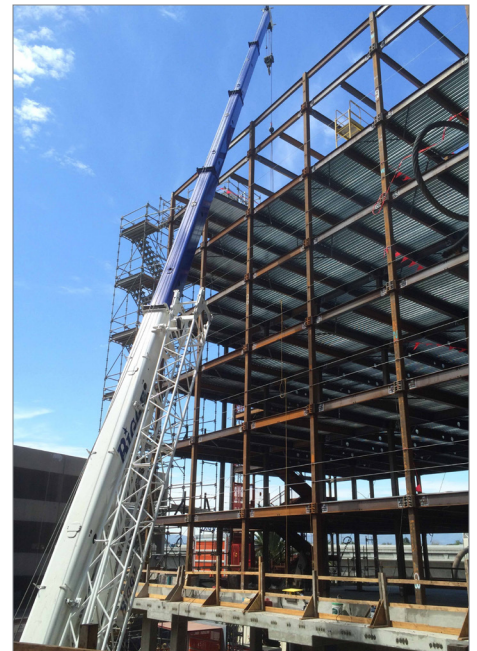


# AC MARRIOTT HOTEL



## PROJECT NARRATIVE

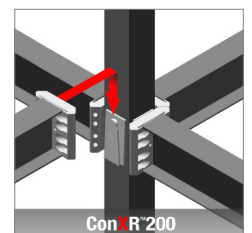
The AC Marriott Hotel is a seven-story, 210 room hotel comprising 79,469 ft<sup>2</sup>. Located in downtown San Jose, it is the first AC Hotel by Marriott in California. This “design-forward” boutique chain features a contemporary, simple, yet elegant European-style design. The project will achieve LEED Gold through several energy saving technologies including light harvesting, architectural louver sunshades, on-site fuel cell power generation, and variable refrigerant flow cooling and heating with smart controls in every room.

## CONX SOLUTIONS

ConXtech was an ideal solution for the unique geometry of this structure, which includes an interior courtyard for the pool. The building also showcases several distinctive architectural features including parapet walls and roof eyebrows, both of which fully utilize integrated ConX framing.

## PROJECT DATA

Square Footage	79,469 ft <sup>2</sup>
Steel Assembly Duration	18 Days
Number of Collars	444
Bay Spacing	Varied, 11'x11.5' to 19'x8.5'
Structure Weight	498 tons; 12.5 lbs./ft <sup>2</sup>



## STAKEHOLDERS

Owner	PCA III LLC
Architect	DLR Group
Engineer	DLR Group
Steel Fabricator	ConXtech Manufacturing
Steel Erector	ConXtech Construction
ConXtech Scope	ConXtech Construction
ConXtech Scope	Structural Steel, Stairs, Metal Decking



## CONTACT US

ConXtech, Inc. 6701 Koll Center Parkway, Suite 150, Pleasanton, CA 94566  
E-mail: [info@conxtech.com](mailto:info@conxtech.com) | Phone: 510-264-9111 | [www.ConXtech.com](http://www.ConXtech.com)