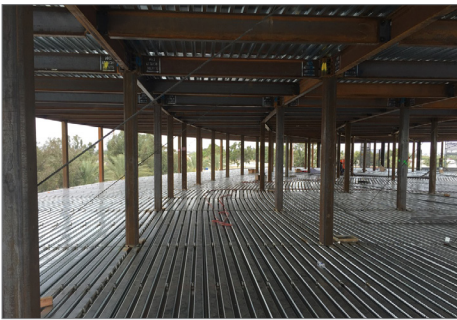


BICYCLE CLUB HOTEL



Rendering: Lee & Sakahara



PROJECT NARRATIVE

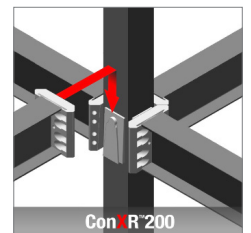
This six-story, 71,730 ft², hybrid linear/polar radial grid hotel tower was erected over a 30 foot, two-story podium. The 99-room tower is adjacent to other peripheral facilities currently under construction, which will include several restaurants, a top-notch brewery, a luxurious Hotel Spa, a state-of-the-art fitness center, an elevated temperature-controlled outdoor pool and sun deck with outdoor bar, as well as a full service event space for live entertainment. These offerings are in addition to the existing casino which hosts one the largest card rooms in the country.

CONX SOLUTIONS

Assembled in 15 days, the ConX frame saved over a month from the general contractor's original schedule. Efficient frame spacing and zero bracing assisted in achieving program requirements and room layout flexibility.

PROJECT DATA

Square Footage	71,730 ft ²
Steel Assembly Duration	15 Days
Number of Collars	316
Bay Spacing	14' x 14'
Structure Weight	430 tons; 12 lbs./ft ²



STAKEHOLDERS

Owner	Bicycle Casino LP
Architect	Lee & Sakahara
Engineer	Englekirk
Contractor	R. D. Olson
Steel Fabricator	ConXtech Manufacturing
Steel Erector	ConXtech Construction
ConXtech Scope	Structural Steel



CONTACT US