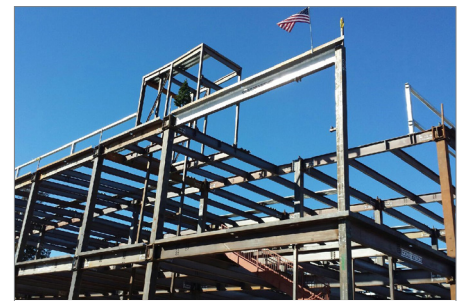


# CORESITE SV-6 DATA CENTER



## PROJECT NARRATIVE

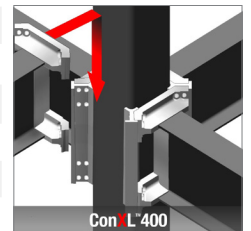
This 136,000 ft<sup>2</sup> data center in Santa Clara, CA was erected in just 9 days. The structure is part of CoreSite's 618,000 ft<sup>2</sup> campus at Coronado Drive and Stender Way.

## CONX SOLUTIONS

The ConXL System addressed CoreSite's need for a robust, long-span steel data center frame delivered cost-effectively and with increased speed to market. ConXL's inherent lack of shear walls and bracing allow for a fully open and reconfigurable floor plan which provides ultimate flexibility for mechanical system routing and future upgrades. The ConXL System also delivered a solution for the highly concentrated floor loadings (275 psf) required with unparalleled structural efficiency.

## PROJECT DATA

Square Footage	136,000 ft <sup>2</sup>
Steel Assembly Duration	9 Days
Number of Collars	164
Bay Spacing	30'-4" x 31"
Structure Weight	1,275 tons; 19 lbs./ft <sup>2</sup>



## STAKEHOLDERS

Owner	CoreSite
Architect	DCM
Engineer	FBA Engineers
Contractor	MATT Construction
Steel Fabricator	ConXtech Manufacturing
Steel Erector	ConXtech Construction
ConXtech Scope	Structural Steel, Stairs, Metal Decking



## CONTACT US