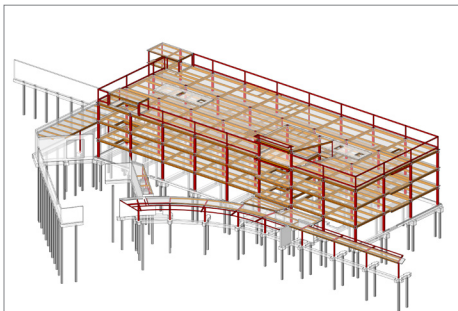


# KAISER PERMANENTE MEDICAL OFFICE, San Mateo



## PROJECT NARRATIVE

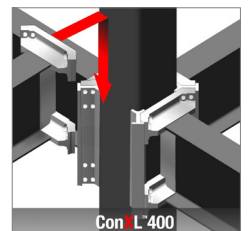
Kaiser Permanente built a 64,700 ft<sup>2</sup> 3-story medical office building to provide additional services for its 40,000 San Mateo County members. The medical office building has a contemporary design with precast concrete, glass and metal panels making up the majority of the exterior. ConXtech has provided solutions for several other Kaiser Permanente locations including San Leandro and San Marcos.

## CONX SOLUTIONS

ConXtech met an aggressive schedule of 4 weeks fabrication, 6.5 days steel assembly and 3 weeks thereafter to complete steel, deck and concrete over metal deck, maximizing full coordination with other subcontractors. The building meets the Leadership in Energy and Environmental Design (LEED) standards Silver rating.

## PROJECT DATA

Square Footage	64,700 ft <sup>2</sup>
Steel Assembly Duration	6.5 Days
Number of Collars	108
Bay Spacing	28.5' x 28.5'
Structure Weight	394 tons; 12.2 lbs./ft <sup>2</sup>



## STAKEHOLDERS

Owner	Kaiser Permanente
Architect	Ratcliff Architects
Engineer	Forell / Elseser Engineers
Contractor	DPR Construction, Inc.
Steel Fabricator	ConXtech Manufacturing
Steel Erector	ConXtech Construction
ConXtech Scope	Structural Steel, Stairs, Metal Decking

PROFESSIONAL SEAL

10

## LEVEL 2 FRAMING PLAN

Copyright © 2000 - 2018 ConXtech, Inc. All rights reserved

[www.ConXtech.com](http://www.ConXtech.com)