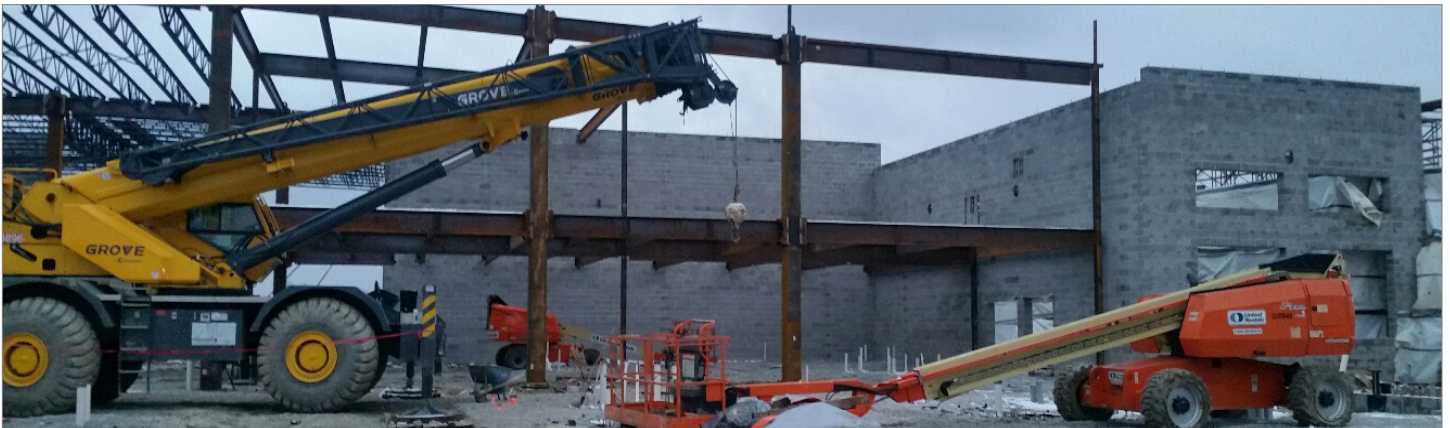


MENTOR HEALTH AND WELLNESS HEALTHCARE



Rendering: The Boldt Company



PROJECT NARRATIVE

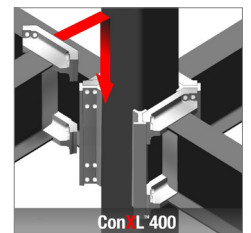
This 82,400 ft² ConXL 400 structure is the first ConX structure to be erected in Ohio. This healthcare/fitness facility will house an urgent care center, imaging, lab, sports medicine, physical therapy, fitness equipment and several swimming pools all under one roof. This medically-based health and wellness center will serve the greater Mentor, OH area providing citizens access to high-quality care.

CONX SOLUTIONS

ConXtech provided 46,000 SqFt of frame and another 36,000 SqFt of bar joist area. It is the first ConX structure that combines the ConXL standard connection, bar joists and CMU shear wall all in one project. The ConXL 400's pre-welded moment frame connection allowed for steel erection despite rain, snow and freezing temperatures in an environment where typical moment frame erection with field welding could not reliably or efficiently take place.

PROJECT DATA

| | |
|-------------------------|----------------------------------|
| Square Footage | 82,400 ft ² |
| Steel Assembly Duration | 10 Days |
| Number of Collars | 41 |
| Bay Spacing | 30' x 30' |
| Structure Weight | 363 tons; 9 lbs./ft ² |



STAKEHOLDERS

| | |
|------------------|---|
| Owner | Lake Mentor Properties LLC, Lake County Ohio Port Economic Development Authority |
| Architect | TC Architects |
| Engineer | Ohlin & Reed |
| Contractor | The Boldt Company |
| Steel Fabricator | ConXtech Manufacturing |
| Steel Erector | ConXtech Construction |
| ConXtech Scope | Structural Steel, Bar Joists, Metal Decking, Misc. Metals |

CONTACT US

ConXtech, Inc. 6701 Koll Center Parkway, Suite 150, Pleasanton, CA 94566
E-mail: info@conxtech.com | Phone: 510-264-9111 | www.ConXtech.com