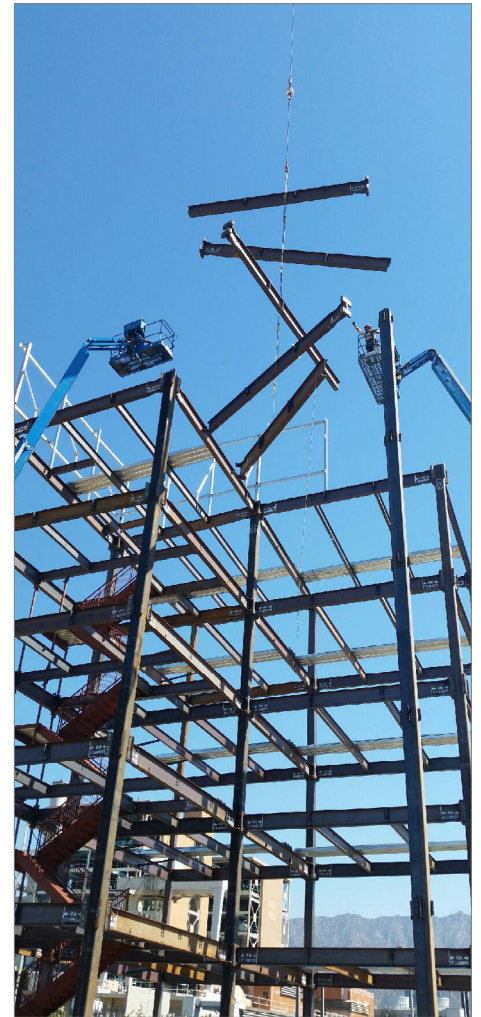


# NICKELODEON STUDIOS COMMERCIAL



## PROJECT NARRATIVE

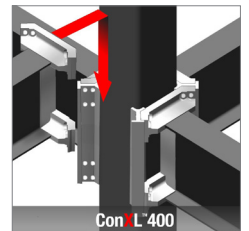
This 110,000 square foot expansion to Nickelodeon Studios' existing 72,000 ft<sup>2</sup> complex in Burbank, CA will serve as the West Coast "hub" for their animation and live-action production teams. The expansion allows the company to bring all of its creative personnel back under one roof.

## CONX SOLUTIONS

The open bays inherently provided by the ConXL System allowed for flexible placement of highly advanced animation imagery equipment, as well as office space customization. Additionally, the ConXL chassis allowed for seamless integration of the precast concrete exterior wall system.

## PROJECT DATA

|                         |                                   |
|-------------------------|-----------------------------------|
| Square Footage          | 110,000 ft <sup>2</sup>           |
| Steel Assembly Duration | 18 Days                           |
| Number of Collars       | 140                               |
| Bay Spacing             | 30' x 30'                         |
| Structure Weight        | 670 tons; 12 lbs./ft <sup>2</sup> |



## STAKEHOLDERS

|                  |                                   |
|------------------|-----------------------------------|
| Owner            | Accord/ BRO Members, LLC          |
| Architect        | DLR Group, Pasadena               |
| Engineer         | Englekirk                         |
| Contractor       | McCormick Construction            |
| Steel Fabricator | ConXtech Manufacturing            |
| Steel Erector    | ConXtech Construction             |
| ConXtech Scope   | Structural Steel, Decking, Stairs |

**CONXL**™



## CONTACT US

ConXtech, Inc. 6701 Koll Center Parkway, Suite 150, Pleasanton, CA 94566  
E-mail: [info@conxtech.com](mailto:info@conxtech.com) | Phone: 510-264-9111 | [www.ConXtech.com](http://www.ConXtech.com)