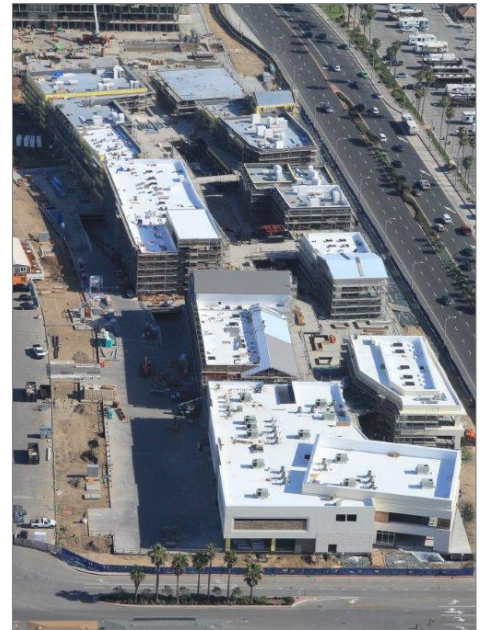


# PACIFIC CITY RETAIL



## PROJECT NARRATIVE

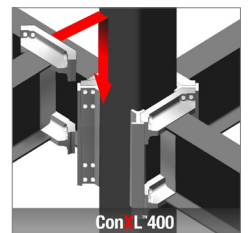
This 3-story 450,000 ft<sup>2</sup> ConXL structure sits atop a 2-story parking garage. Street level retail areas complete this innovative building located directly on Pacific Coast Highway and the beach.

## CONX SOLUTIONS

ConXL columns were configured and anchored to existing concrete columns previously poured and set within the parking garage structure.

## PROJECT DATA

Square Footage	450,000 ft <sup>2</sup>
Steel Assembly Duration	60 Days
Number of Collars	1,552
Bay Spacing	30' x 32'
Structure Weight	2,745 tons; 13.8 lbs./ft <sup>2</sup>



## STAKEHOLDERS

Owner	DJM Capital
Architect	SMS Architects
Engineer	FWC Structural Engineers
Contractor	C.W. Driver Builders
Steel Fabricator	ConXtech Manufacturing
Steel Erector	ConXtech Construction
ConXtech Scope	Structural Steel, Decking