



## 235 BERRY STREET HIGH DENSITY RESIDENTIAL

### PROJECT NARRATIVE

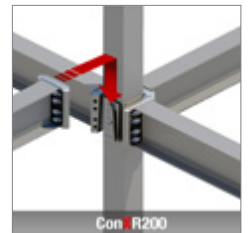
Located just blocks from AT&T Stadium in the Mission Bay District of San Francisco, CA, this 126,000 ft<sup>2</sup> high-end condominium building consists of 99 units ranging from 1,000 ft<sup>2</sup> to 2,500 ft<sup>2</sup>. The exterior façade finishes range from metal panel to thin brick. The 5-story ConX structure sits atop a 2 level concrete podium.

### CONX SOLUTIONS

With mid-rise structures surrounding this project, the single-sided street access made site logistics complex. To minimize neighborhood impact, ConXtech utilized a mobile tower crane to erect the building from within its own footprint.

### PROJECT DATA

Square Footage	126,000 ft <sup>2</sup>
Steel Assembly Duration	25 Days
Number of Collars	695
Bay Spacing	12' x 16'
Structure Weight	756 tons; 12 lbs./ft <sup>2</sup>



### STAKEHOLDERS

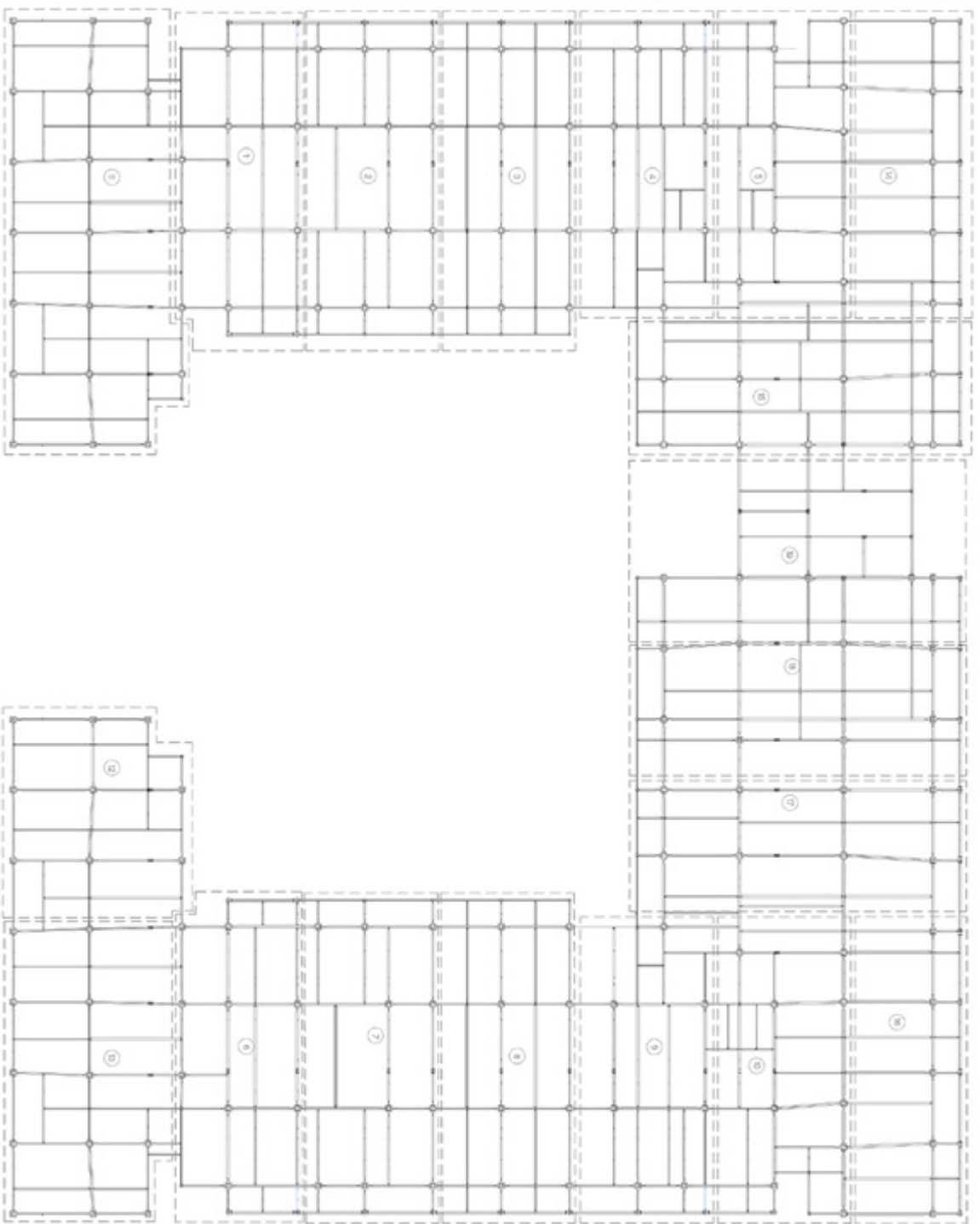
Owner	Signature Properties
Architect	Leddy Maytum Stacy Architects
Engineer	Nishkian Menninger
Contractor	Devcon Construction
Steel Fabricator	ConXtech Manufacturing
Steel Erector	ConXtech Construction
ConXtech Scope	Structural Steel, Stairs, Metal Decking, Exterior Panels

### CONTACT US

ConXtech, Inc. 6701 Koll Center Parkway, Suite 150, Pleasanton, CA 94566  
 E-mail: [info@conxtech.com](mailto:info@conxtech.com) | Phone: 510-264-9111 | [www.ConXtech.com](http://www.ConXtech.com)



# FRAMING PLAN - 235 BERRY STREET



DATE	10/11/05	SCALE	AS SHOWN
PROJECT	235 BERRY STREET SAN FRANCISCO, CALIFORNIA		
CLIENT	4TH FLOOR FINISHING		
DESIGNER	CONXTech		
ARCHITECT	SERRAVALLO ARCHITECTS		
NO.	4-2		