



KAISER PERMANENTE SAN MATEO HEALTHCARE

PROJECT NARRATIVE

Kaiser Permanente built a 64,700 ft² 3-story medical office building to provide additional services for its 40,000 San Mateo County members. The medical office building has a contemporary design with precast concrete, glass and metal panels making up the majority of the exterior. ConXtech has provided solutions for several other Kaiser Permanente locations including San Leandro and San Marcos.

CONX SOLUTIONS

ConXtech met an aggressive schedule of 4 weeks fabrication, 6.5 days steel assembly and 3 weeks thereafter to complete steel, deck and concrete over metal deck, maximizing full coordination with other subcontractors. The building meets the Leadership in Energy and Environmental Design (LEED) standards Silver rating.

PROJECT DATA

Square Footage	64,700 ft ²
Steel Assembly Duration	6.5 Days
Number of Collars	108
Bay Spacing	28.5' x 28.5'
Structure Weight	394 tons; 12.2 lbs./ft ²



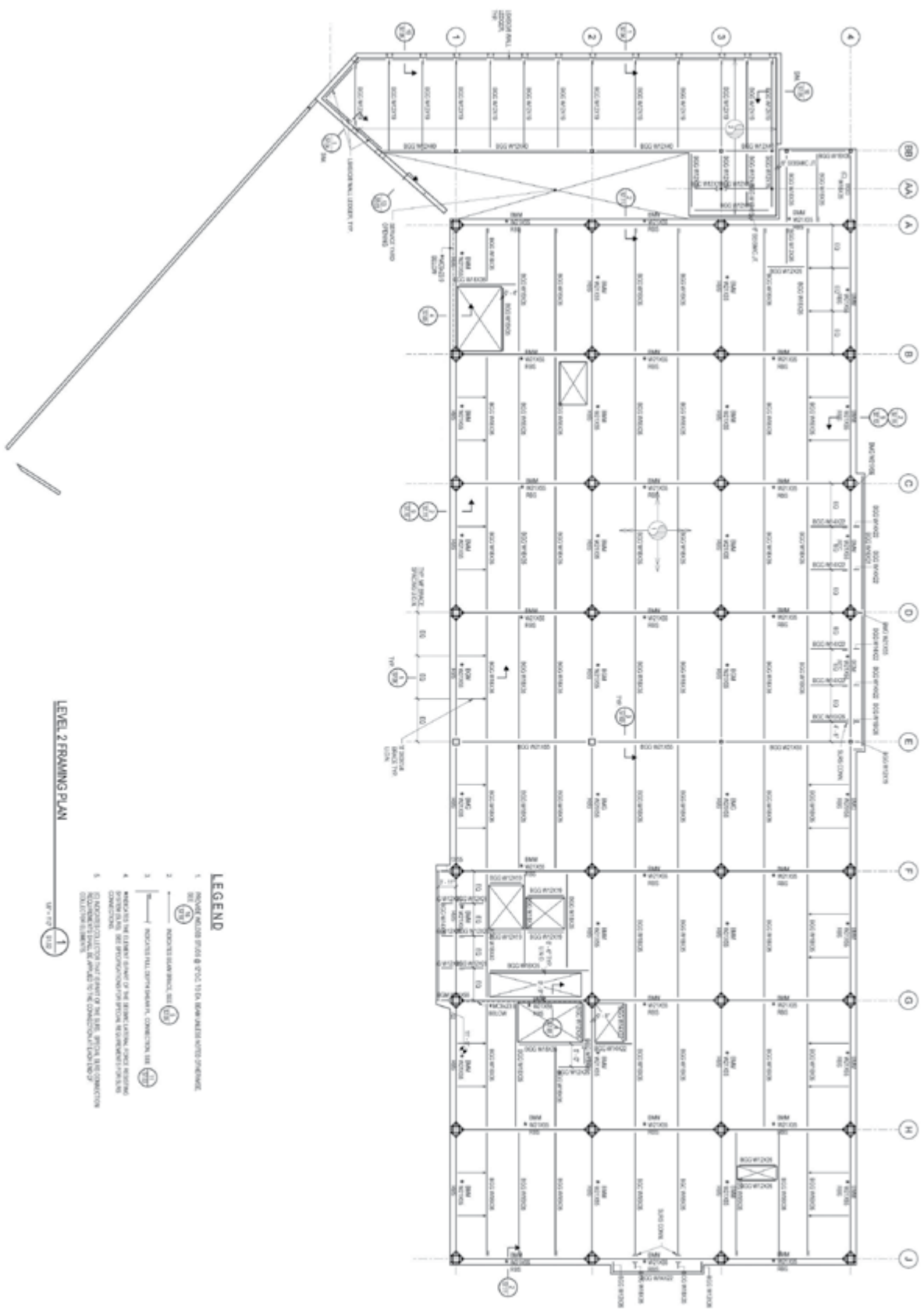
STAKEHOLDERS

Owner	Kaiser Permanente
Architect	Ratcliff Architects
Engineer	Forell / Elsesser Engineers
Contractor	DPR Construction, Inc.
Steel Fabricator	ConXtech Manufacturing
Steel Erector	ConXtech Construction
ConXtech Scope	Structural Steel, Stairs, Metal Decking



CONTACT US

FRAMING PLAN - KAISER PERMANENTE, San Mateo



LEVEL 2 FRAMING PLAN

- LEGEND**
1. PROVIDE COLUMN BRIDG & JOIC 15/16. REINFORCER AFTER CONCRETE
 2. NO. 4 @ 12" (12)
 3. NO. 4 @ 12" (12)
 4. PROVIDE THE ELEMENT SHOWN AT THE BEAM/COLUMN JOINT RESISTING SHEAR FLUX AND PREVENT OVERLAP WITH REINFORCER FROM AN ADJACENT MEMBER
 5. PROVIDE THE ELEMENT SHOWN AT THE JOINT RESISTING CONNECTION MOMENT AND PREVENT OVERLAP WITH REINFORCER FROM AN ADJACENT MEMBER



CONXTECH
 CONSTRUCTION SOFTWARE
 10000 S. DEER CREEK ROAD
 SUITE 100
 DENVER, CO 80231
 (303) 751-1100
 WWW.CONXTECH.COM

REVISIONS	DATE	BY	CHK

PROJECT ADDRESS: 300 PUNJAB AVENUE SAN MATEO, CA 94401
PLAN SET NUMBER: BRACN CHECK REVISION

KAISER SM MOB

LEVEL 2 FRAMING PLAN

DATE PLOTTED: 1/27/14	SCALE: 1/8" = 1'-0"
DRAWN BY: K. HARRIS	CHECKED BY: K. HARRIS
PROJECT NO.: 14000000	DATE: 1/27/14
\$1.02	